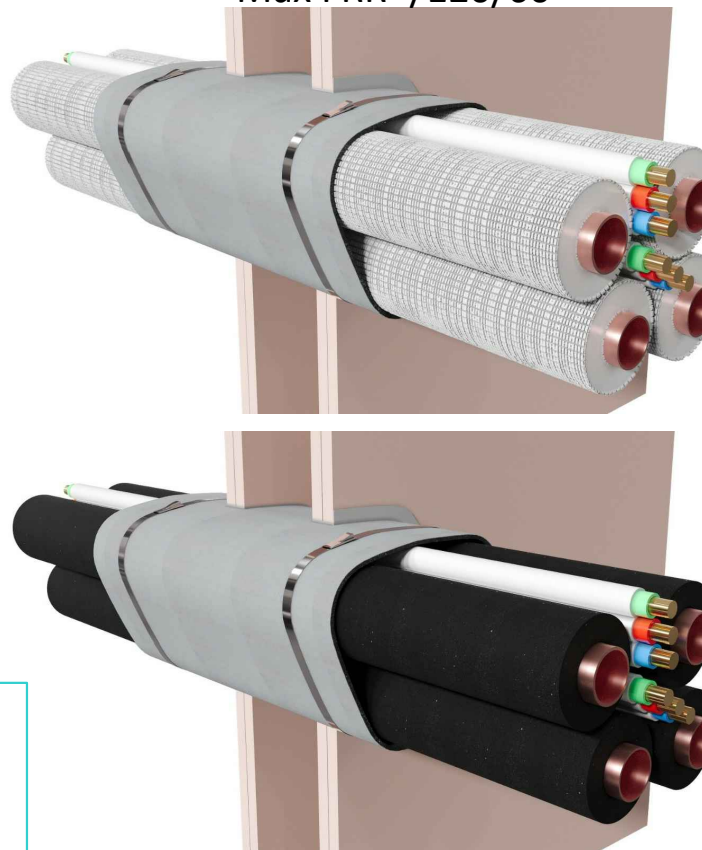


AGNI-Sleeve in 2 x 13mm Plasterboard Wall or 116mm (or greater) Concrete Wall Up to 2 x Pair Coils with TPS Cables Foam or Fire-rated Insulation Max FRR -/120/60

System ID# FC609

Step-by-step installation instructions:

1. Ensure the aperture is clean.
2. Cut a section of AGNI-Sleeve to fit around the penetration with an overlap of 60mm (nominal). The AGNI-Sleeve should be wide enough to extend at least 25mm beyond the wall on both sides to allow the AGNI-Straps to be attached.
3. Position the AGNI-Sleeve centrally within the wall and apply the tighten the AGNI-Straps until the AGNI-Sleeve fits snugly around the penetration.
4. Fill the aperture with AGNI-Seal to a depth of 26mm, i.e. full depth of plasterboard lining.
5. Apply a 10mm bead of AGNI-Seal at the AGNI-Sleeve / wall junction.



Technical Information

Substrate	<ul style="list-style-type: none"> • Min. 64mm steel or timber stud wall with a minimum of two layers of 13mm (or greater) FR plasterboard on each side, with or without insulation. • Min. 116mm concrete wall
Service type	AC-Bundle 2x Pair coils with PE insulation/FR insulation & 2x TPS cables
Annular gap	Min: 3mm, Max: 19mm
AGNI-Sleeve dimensions	Width: 300mm; Thickness: 3mm
AGNI-Products	AGNI-Seal; AGNI-Straps, AGNI-Sleeve
Protection installation	Both sides of the wall

Compliance Information

Standards	AS1530.4-2014, AS4072.1-2005
FRR/FRL (Pair coils protected with PE insulation)	-/120/30
FRR/FRL (Pair coils protected with FR insulation)	-/120/60
Reference	RIRF24020

Disclaimer

Agnitek reserves the right to modify product specifications without prior notice due to its ongoing research, development & certification programme. The information in this document is provided in good faith and is intended for guidance purposes only. Any accompanying drawings are solely for illustrative purposes. Since Agnitek cannot oversee installation methods or ensure site conditions, no warranties, expressed or implied, are intended regarding the products' actual performance. We do not accept liability for any loss, damage, or injury from using this information. Please take a look at the test reports displayed on a relevant AGNI-System webpage for all compliance specifics.



Agnitek
FIRE RATED TECHNOLOGY

8 Clare St Bayswater
VIC 3153, AUSTRALIA
www.agnitek.com.au

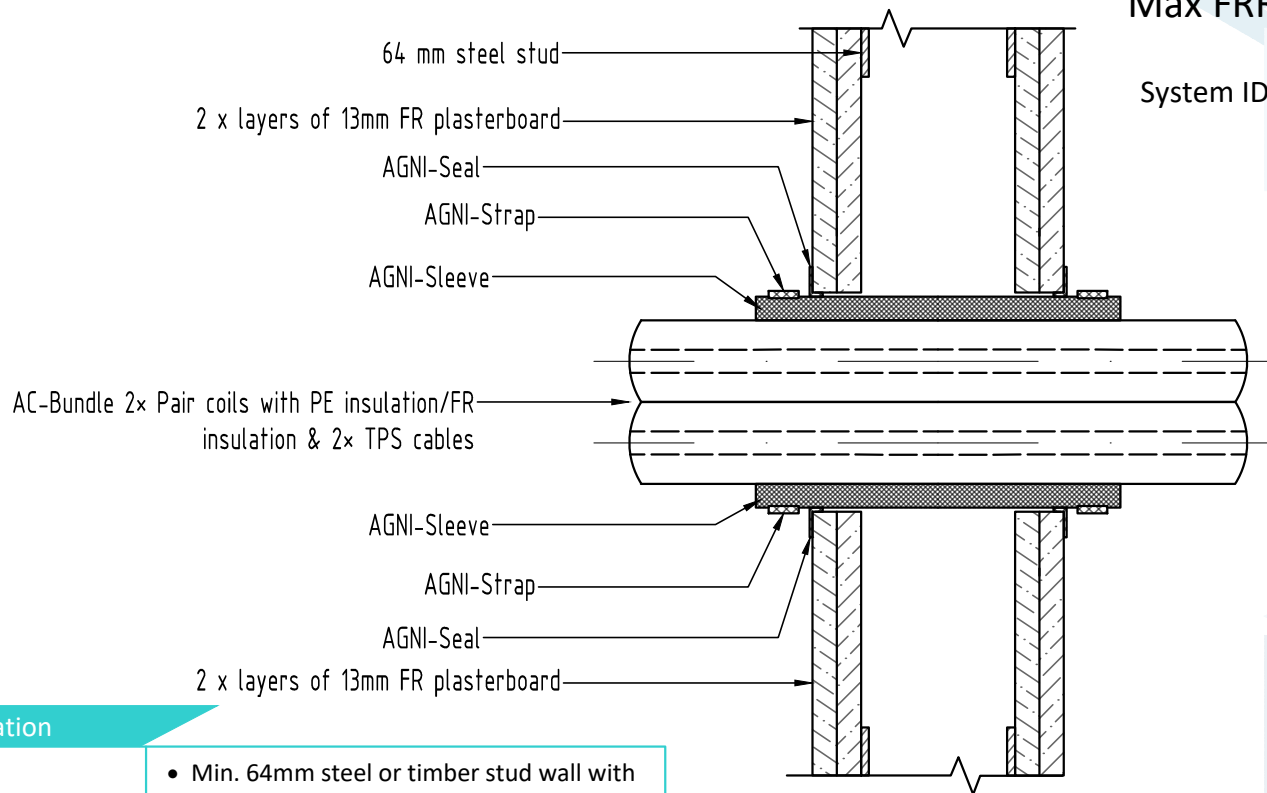
Date 10.05.2024



AGNI-Sleeve in 2 x 13mm Plasterboard Wall or 116mm (or greater) Concrete Wall Up to 2 x Pair Coils with TPS Cables, Foam or Fire-rated Insulation

Max FRR -/120/60

System ID# FC609



Technical Information

Substrate	<ul style="list-style-type: none">Min. 64mm steel or timber stud wall with a minimum of two layers of 13mm (or greater) FR plasterboard on each side, with or without insulation.Min. 116mm concrete wall
Service type	AC-Bundle 2x Pair coils with PE insulation/FR insulation & 2x TPS cables
Annular gap	Min: 3mm, Max: 19mm
AGNI-Sleeve dimensions	Width: 300mm; Thickness: 3mm
AGNI-Products	AGNI-Seal; AGNI-Straps, AGNI-Sleeve
Protection installation	Both sides of the wall

Compliance Information

Standards	AS1530.4-2014, AS4072.1-2005
FRR/FRL (Pair coils protected with PE insulation)	-/120/30
FRR/FRL (Pair coils protected with FR insulation)	-/120/60
Reference	RIRF24020



Agnitek
FIRE RATED TECHNOLOGY

8 Clare St Bayswater
VIC 3153, AUSTRALIA
www.agnitek.com.au

Disclaimer

Agnitek reserves the right to modify product specifications without prior notice due to its ongoing research, development & certification programme. The information in this document is provided in good faith and is intended for guidance purposes only. Any accompanying drawings are solely for illustrative purposes. Since Agnitek cannot oversee installation methods or ensure site conditions, no warranties, expressed or implied, are intended regarding the products' actual performance. We do not accept liability for any loss, damage, or injury from using this information. Please take a look at the test reports displayed on a relevant AGNI-System webpage for all compliance specifics.

Date 10.05.2024